

Severn  
Edge

Bro  
Hafren



# About

A dual-site approach at the centre of the Western Gateway geography



## Oldbury-on-Severn

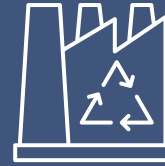
150ha of land that is nationally designated for nuclear development (EN-6) with existing assets & grid infrastructure.



## Berkeley

University Technical College for engineering & cyber, plus ground-breaking R&D facilities to support low carbon & renewable energy technology.

At the heart of the Western Gateway low carbon energy supercluster, with potential for:



New Nuclear



Hydrogen



Synthetic aviation fuel

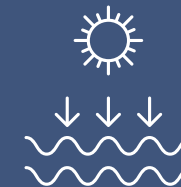
Alongside other renewable energy opportunities in the wider Western Gateway energy system including:



Solar



Wind



Tidal

Severn Edge is ready to deliver a net zero future while levelling up communities and boosting the economy.



# Mission & Aims

**Champion the development of Severn Edge as a flagship project within the Western Gateway Low Carbon Energy Super Cluster, resulting in investment, high quality jobs and skills opportunities for our local communities.**

Led by the Western Gateway Partnership, Severn Edge is a collaboration of industry, academia, communities and political leaders, which champions the development of a low carbon energy hub – fostering innovation in renewable energy, hydrogen and new nuclear technology.



## Low carbon energy hub

- Combine the strengths of the Oldbury and Berkeley sites, to develop a low carbon energy hub and campus, that drives forward the national net zero journey.
- Deliver a high quality, clean, green campus environment.



## Economic opportunities

- Support low carbon energy developments and grow supply chains that invest in and drive up the local economy.
- Grow export opportunities locally and across the region.



## Boost STEM skills

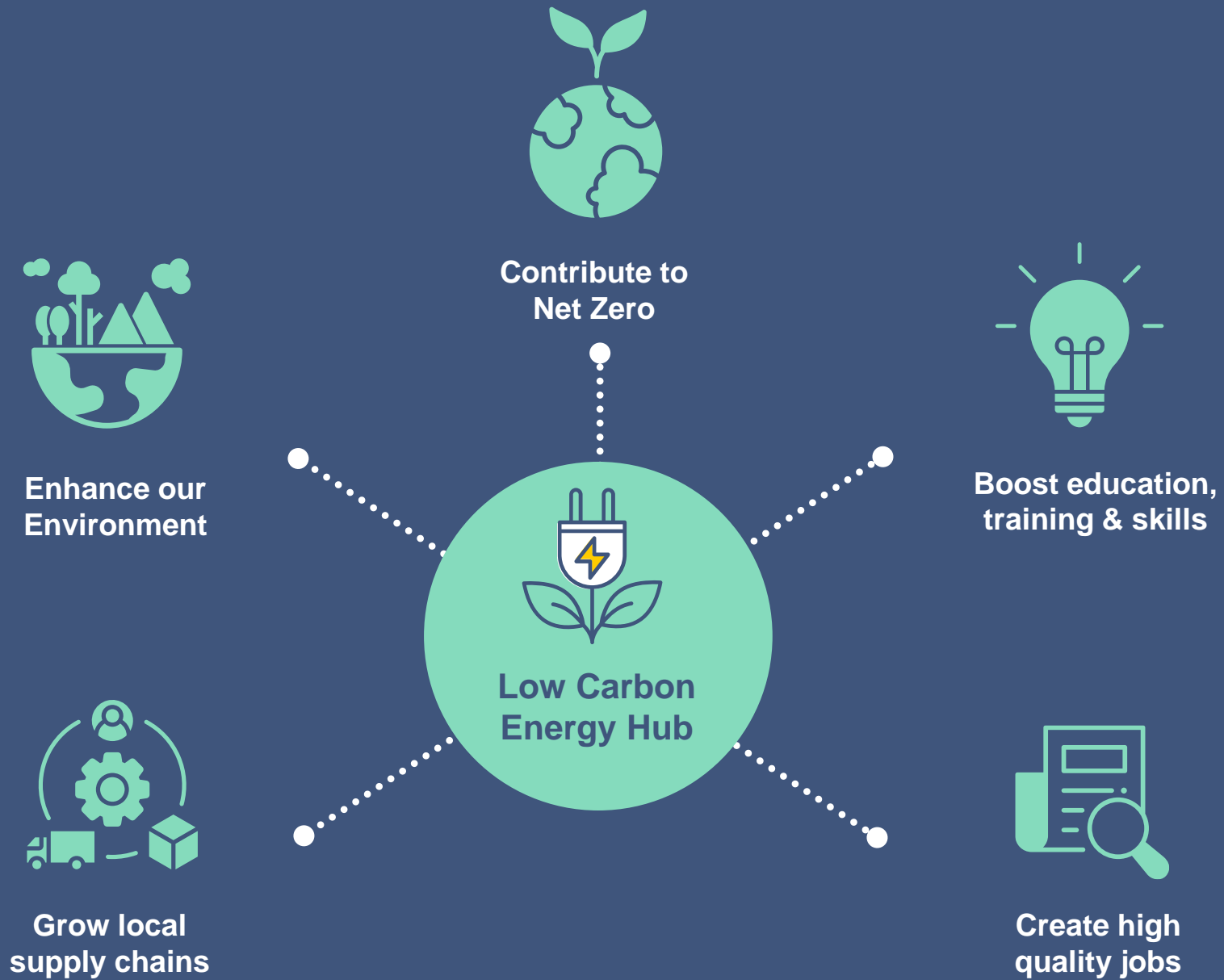
- Develop STEM skills infrastructure that will help drive a wider Western Gateway Low Carbon Energy Super Cluster whilst also providing new opportunities for local communities.



## Level up areas of need

- Disadvantaged communities exist across Forest of Dean, South Wales, Gloucestershire, South Gloucestershire and Somerset that would benefit from a transformational opportunity at Severn Edge.

# Vision



# Severn Edge

## Low Carbon Energy Campus



Severn Edge  
**Oldbury**

Severn Edge  
**Berkeley**

-  M4 & M5  
20 mins
-  Bristol: 30 mins  
Gloucester: 45 mins
-  Bristol: 45 mins  
Heathrow: 2 hours
-  Park & Ride M5 J14  
20 mins
-  132KV-400KV  
grid connection

This diagram is for illustrative purposes only

# Energy for a growing economy

HYLINE CYMRU 1

H<sub>2</sub>

PROJECT UNION

H<sub>2</sub>

← SOUTH WALES INDUSTRIAL CLUSTER

Pembroke Net Zero Centre & Milford Haven: Energy Kingdom

HYLINE CYMRU 2

SEVERN EDGE

H<sub>2</sub>

South Wales Industrial Cluster

Compound Semiconductor Cluster

Avonmouth & Severnside Industrial Cluster

Golden Valley Cyber Cluster

Aerospace Cluster

SWANSEA

PORT TALBOT

BRIDGEND

CARDIFF

NEWPORT

ABERTHAW GREEN ENERGY PARK

BRISTOL

SEABANK POWER STATION

BRISTOL & BATH

BRISTOL AIRPORT

GRAVITY

CHELTENHAM

GLOUCESTER

SHARPNESS

AVIATION FUEL PIPELINE

TRANSMISSION PIPE

H<sub>2</sub> SAF

# Regional Strengths to support innovation

-  **Severn Edge**

---

-  **Western Gateway**

---

- 1** Digital Innovation  
(Smart Cities, Digital Creativity & Health)

---

- 2** Digital Innovation (Environment)

---

- 3** Nuclear Cluster

---

- 4** Automotive Corridors

---

- 5** Aerospace Core

---

- 6** Maritime UK South West

---

- 7** Hydrogen Corridor

---

-  Digital Innovation

---

-  Advanced Engineering

---

-  Microelectronics (underpins both)

---

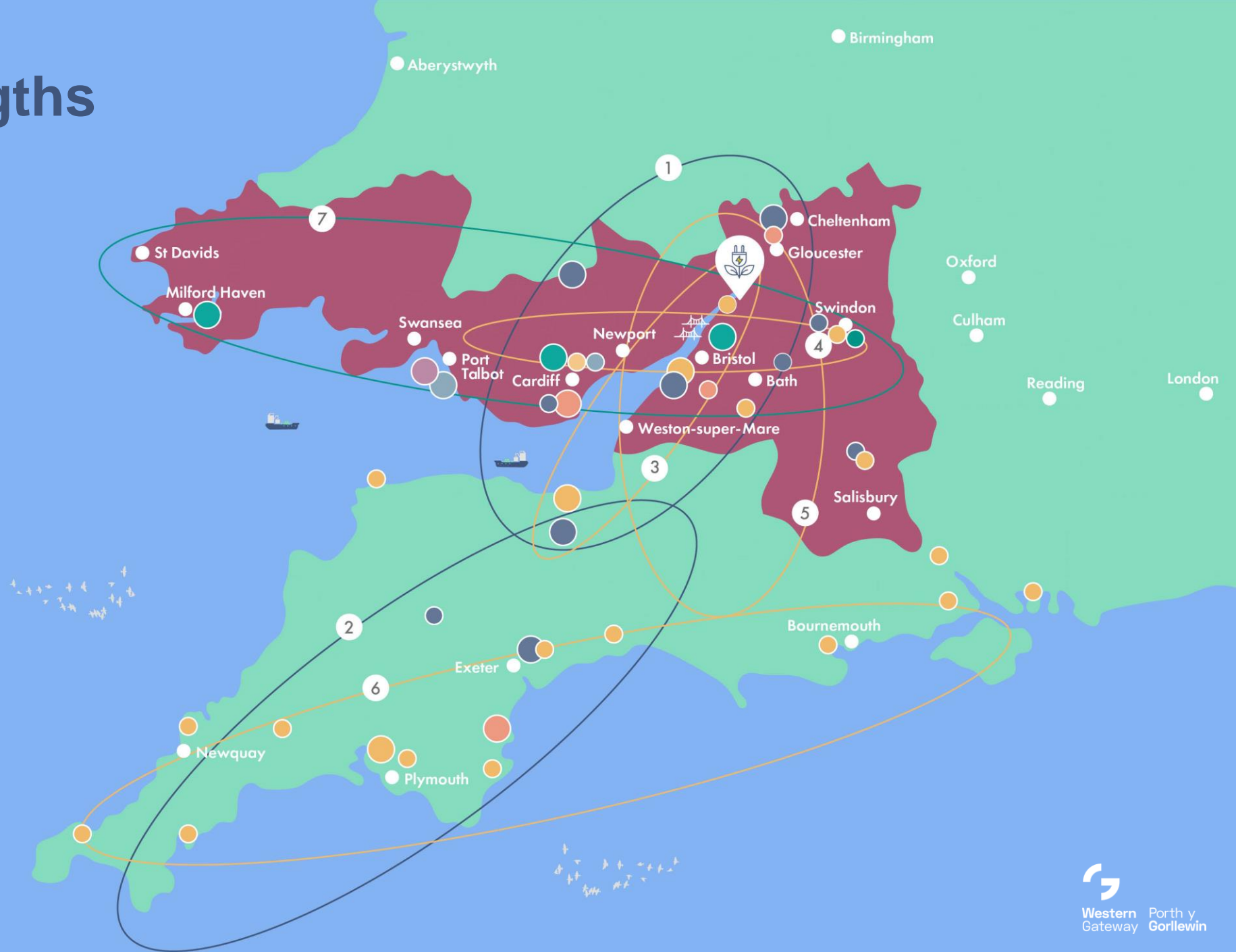
-  Hydrogen

---

-  Steel Innovation

---

-  Advanced Materials



# Ready To Go...



**History of strong political support and very engaged and supportive communities.**

**History of licences and permits and working with regulators.**

**Construction expertise**

Highly regulated sectors e.g.: Hinkley Point C.

**Skilled People**

Strong knowledge base, c334,000 people employed in Knowledge Intensive Businesses and Services locally (55% of employment).

**Ready to go sites**

Key infrastructure available for reuse , designated in national policy for nuclear development.

**Industry**

Strong technology supply chains in nuclear, aerospace, marine digital, cyber, robotics, high value manufacture, construction, energy, hydrogen.

**Supply chains**

Aerospace, digital, robotics, lithium, nuclear.

**Transport infrastructure**

Multi-modal with options to expand including road and marine off-loading.

**Skills Infrastructure**

Future Workforce Pipeline: STEM Colleges, 7 Universities, National Institute of Technology.





Led by



Western Gateway Porth y Gorllewin

In collaboration with



With information and advice from



Office for Investment



**Andy Bates**

Nuclear Lead

Western Gateway / Business West

T: 07387 022 779

E: [andy.bates@businesswest.co.uk](mailto:andy.bates@businesswest.co.uk)

**James Cooke**

Deputy Director

Western Gateway

T: 07780 494 199

E: [james.cooke@western-gateway.co.uk](mailto:james.cooke@western-gateway.co.uk)



Severn  
Edge

Bro

Hafren